



forage focus

Arcview Program

A great tool for designing your rotational grazing plan

Larry Fischer loves working with Arcview – a software package that helps you design a grazing plan that is tailored to your land base. As Farm Production Advisor for MAFRI, he travels all over the province to meet with producers to create detailed workable rotational grazing plans. “I’ve been doing this for 20 years,” says Fischer. “I started out using graph paper to design the plans, then went to power point and now I have this great software.” Fischer noted that the Arcview program has been tweaked by the MAFRI Information Technology Department to fit the exact needs of his clients. “Farmers interested in developing an environmental farm plan really appreciate having

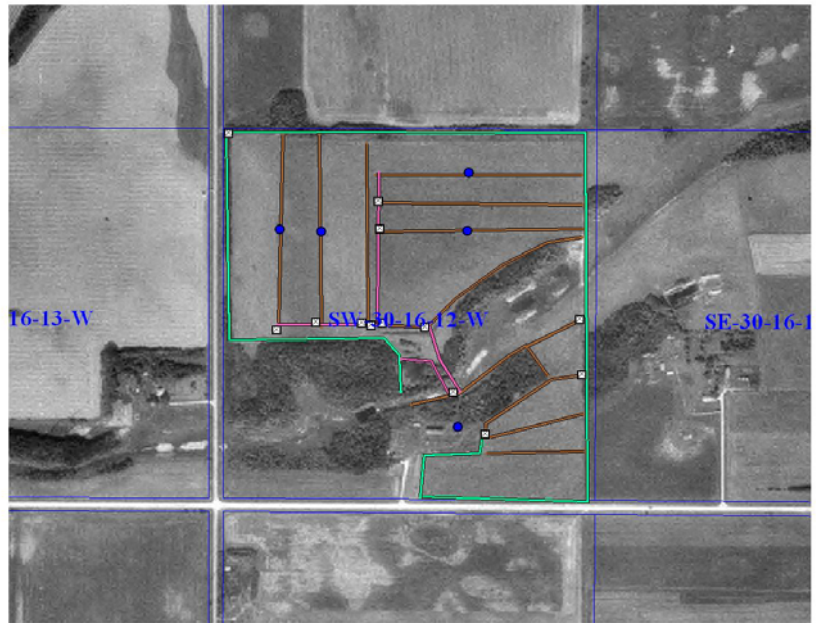
Rotational Grazing Design: SW-30-16-12-W



Prepared for:
Larry Fischer
XXXX XXXX
XXXXXXXXXX, Manitoba
XXXX XXXX
(204) XXX-XXXX

- Water Site
- Gate
- Temporary Fence
- Alley
- Creek/River Exclusion
- Exterior Electric Fence
- Existing Interior Fence
- Interior Paddock Division
- Dugout Exclusion
- Underground Water Pipe
- Quartersec.shp

Created on: 12/11/2007
Created by:
Larry Fischer
Livesbcw@forage.mb.ca
Manitoba Agriculture & Food
Box 532
Gladstone, Manitoba
R0J 0T0
Phone: (204)305-2056
Fax: (204)305-2019
Email: lfischer@gov.mb.ca



In this issue:

Cover Story	1	Coming Events	7
Board News	2	Forage Bits	9
MFC Reports	5	Affiliated Member Reports	15
Events - A Review	6	Board of Directors	16




Arcview continued

this layout done because they can apply for funding to get back 50% of their costs. This includes the materials such as water pumps, posts, high tensile wires and even labour.”

The Arcview program (Desktop Geographic Information System) includes aerial photos of all quarter sections of land in Manitoba. Fischer prints out the photo and then reviews them with the producer. Often, everything is not exact as the aerial photos were taken in 1995. Together, they draw out the existing fence lines, walk/drive the property, and then draw up the new fence lines on the photos. Fischer also takes time to discuss their existing management strategies such as their grazing system, winter management of the cow herd, time of calving etc. to determine if any new changes can be implemented. Then, it's back to the office where Fischer draws up the new plan and sends it back to the farmer.

Another huge benefit of the Arcview program is that it provides a list of required materials (i.e. posts, insulators, wire, corner strainers etc.) for each fence and then calculates the number and costs associated with each chosen fence and the total for the entire project.

Another huge benefit of the Arcview program is that it provides a list of required materials (i.e. posts, insulators, wire, corner strainers etc.) for each fence and then calculates the number and costs associated with each chosen fence and the total for the entire project. Over the years, Fischer estimates he has developed about 250 grazing plans ranging in cost from \$400 to \$6,000.

Manitoba Agriculture and Food 

ROTATIONAL GRAZING PROJECT COST ESTIMATE

Name: [REDACTED] Date: 5/26/2008
 Address: [REDACTED] Lease: [REDACTED]
 Phone: [REDACTED]

DESCRIPTION	QUANTITY	\$ /UNIT	COST	TOTAL
Other				
Battery	0.00	@ 90.00	0.00	
Braces	25.00	@ 10.00	250.00	
Corner Strainers	54.00	@ 2.16	116.64	
Fence Tester	0.00	@ 100.00	0.00	
Fencer (AC)	0.00	@ 850.00	0.00	
Fencer (DC)	0.00	@ 850.00	0.00	
Ground Rods	0.00	@ 27.00	0.00	
Lightning Diverter	0.00	@ 29.00	0.00	
Miscellaneous	1.00	@ 100.00	100.00	
Solar Panel	0.00	@ 350.00	0.00	
Springs	0.00	@ 0.00	0.00	
Tape Gates	8.00	@ 10.00	80.00	
Temporary Fence & Posts	0.00	@ 250.00	0.00	
Tighteners	27.00	@ 4.00	108.00	
				\$654.64
TOTAL PROJECT COST				\$1,070.10

Comments: Miscellaneous includes: Warning signs, joint clamps, staples, underground cable, etc.

To read more about Arcview go to esri.com/software/arcgis/arcview/about/features.html or contact your local MAFRI office or Larry Fischer (Gladstone MAFRI) at (204) 871-2109 or larry.fischer@gov.mb.ca

board news

Wayne's Clippings

Well the last couple of months have been very busy as we moved the Manitoba Forage Council office from Selkirk to Brandon. The office is now set up and I am slowly becoming familiar with the many projects and activities that MFC is involved in. A big thank-you to Fraser as well as to Chris and Corie for their help in "showing me the ropes". Fraser has patiently (I think) helped me understand the intricacies of the many projects that MFC is working on, while Chris, our MFC Bookkeeper, and I work on developing a system that will work between Brandon and Selkirk. Corie, thank-you very much for all the work that you are putting into the MFC website and for bringing me up-to-speed on MFC communications. →

Wayne's Clippings continued

The AGM meeting held in mid April was very well attended and provided an excellent opportunity to learn more about hay market opportunities and carbon credits. A big thank-you to all who helped pull this event together, especially the presenters.



A major aspect of Manitoba Forage Council activities is the administration of forage related projects through programs such as the PFRA Greencover Program, ARDI and MRAC. As I came into this position what became quickly obvious is that a very effective team has developed including partners from the Manitoba Forage Council, MAFRI, University of Manitoba and Agriculture and Agri-food Canada. MFC's involvement in this partnership is exciting work as we strive to keep Manitoba's forage industry on the cutting edge.

However, for the Manitoba forage industry to continue to develop and move forward we need to identify the constraints and opportunities, develop longer term goals and prioritize activities to work on. This is especially important as we consider the future role of forages in areas such as carbon sequestration and environmental mitigation. Over the past year or so Fraser and others have set out the groundwork for this Strategic Planning process. The MFC Board of Directors is very supportive and I look forward to continuing this important initiative. It will be very important that we have input from all sectors of the forage industry and I encourage you to bring forward your thoughts and ideas.

Wayne Digby

AGM focuses on Forage Business – Creating Opportunities

Approximately 30 members attended the AGM held in April in Portage la Prairie, MB. The event featured several speakers including Dan Undersander from the University of Wisconsin who gave an overview of the market in the U.S. with regards to hay and forage marketing opportunities. He pointed out that in much of the U.S., hay is in short supply, hay acreage is down, hay production costs are up and we can expect prices to remain high for at least next two years.

Another speaker, Ian Wishart, President of Keystone Agricultural Producers (KAP) gave producers an inside view of some of the ongoing discussion regarding the trading of **carbon credits**. Wishart explained that KAP is trying to develop a formula that will ensure Manitoba gets a better proportion of carbon credits. He explained that Manitoba currently doesn't have enough CO₂ emitters that would be interested in trading, therefore Manitoba needs another market – possibly Europe or California where the credits range from \$20 - \$38 per ton. Evaluation start dates are also a big issue because the suggested practice is to have your property assessed today – he questioned “what about the guy who

has been practicing zero till for years?” Any participation in carbon trading presently requires ISO 14064 certification so he suggested if you are interested in trading in the future; start a farm database now so you can show the changes you have made to your property.”



Wishart, KAP President says, “start a farm database now so you can show the changes you have made to your property.”

board news

New Directors Welcomed

Welcome to our new directors Chris Kletke and Fraser Stewart (who just can't say "no") who will sit on the board. Chris runs a 1600-acre grain/oilseed/hay operation with his father Dowain near Brunkild, MB. They market their hay primarily State side, shipping to Iowa, Wisconsin, Minnesota, Illinois and Indiana. Chris is currently serving as Chair of KAP District 3, and Past Chair of the Canadian Young Farmers Association. He is also a past Board member of the Canadian Agricultural Safety Association. And Fraser Stewart, our previous Executive Director, runs a small mixed farm near Selkirk, MB amidst his time volunteering, consulting, and running a bed and breakfast with his wife Bev.

Farewell to our outgoing directors: Gerry Simonson, Fannystelle and Gerald Bos, Rapid City. Many thanks to you for your expertise and service over the past few years.



Stewart inducted into Manitoba Agricultural Hall of Fame

Born and raised in Winnipeg, **Fraser Stewart** attended St. John's-Ravenscourt School and the University of Manitoba, where he obtained his BSA in Animal Science in 1961. He obtained a Masters of Science in Animal Nutrition from North Dakota State University in 1963.

During his 40 year career with Manitoba Department of Agriculture (now Manitoba Agriculture, Food and Rural Initiatives), Fraser Stewart became known as "Mr. Grassland Specialist." As Grassland Specialist in the Eastern Region of Manitoba and Executive Director of the Manitoba Forage Council, Fraser has distinguished himself as a nationally and internationally recognized expert on grassland research and extension. His knowledge, enthusiasm, innovative thinking and ability to communicate with farmers, researchers and professional colleagues has been recognized with prestigious awards from numerous industry and professional organizations. Fraser is the recipient of a Life Member Award and a Distinguished Agrologist Award from the Manitoba Institute of Agrologists, a Certificate of Merit from the University of Manitoba and the Fellowship Award from the Agriculture Institute of Canada.

Fraser has also been active in his community. Living in Selkirk, Fraser has been involved in, and served on the executives of the Kinsmen, Rotary, the local Agricultural Society, the St. Clements Historic Advisory Committee, Chief Peguis Park Historic Committee and the Selkirk Marine Museum.

Please feel free to join the presentation at William Glesby Centre in Portage la Prairie July 17, 2008 at 1:00 p.m.

MFC Projects on the go....

Check out all the projects MFC administers with help from its government and industry partners.

Project Name	Project Description
Grass Fed Beef Information Workshop/Tour	Practical training event to provide technical information about selection strategies for sourcing cattle suitable for grass finishing.
MFC Grass Fed Beef Model	Develop a user friendly software program to allow individual producers to determine their cost of production for grass finishing beef animals.
An Examination of the Multi-functionality of Forages in Manitoba	Develop a database to assess the multi-functional value of Manitoba grassland and wetland areas.
Annual Forages & Ultrasound for Forage Finished Beef	Demonstrate and evaluate the use of annual forages to finish beef animals and demonstrate ultrasound technology as a tool to assess the degree of marbling, tenderness and fat finish.
MFC Extension Materials	Develop forage and grassland extension materials for Manitoba conditions.
MB Grazing Club Promotion and Support	Hold formal classroom sessions and pasture walks for farmers interested in grazing management as it affects soil and water health and landscape productivity.
MB Forage Crop Variety Testing Program	Provide Manitoba producers with objective information on the growth and yield characteristics of new forage and forage seed cultivars.
Development of Forage Land Planner Software	Develop a forage productivity model to provide seasonal growth predictions for use in calculating stocking rates and feed storage requirements and hold training in the use of the model.
Portable Watering System for Sustainable Management of Integrated Livestock Systems	Demonstrate to producers that portable cattle waterers are a practical means to prevent nutrient buildup around stationary waterers.
Complimentary Annual Pastures to Fill Perennial Pasture Production Gaps for Forage Finished Beef	To identify forage species combinations which will provide high yields of quality forage for finishing animals in the late-August to mid-September period as well as in the fall period.
Manitoba Forage Council Provincial Conferences	Provide current information to beef and forage producers by holding five major technology transfer events throughout Manitoba.
Garland Project - "Managed Grazing Systems in Hardwood Timber Harvested Areas"	To demonstrate and evaluate managed grazing systems on hardwood harvested areas which provide livestock benefits as well as allow for optimum regrowth to meet provincial hardwood stocking standard for future timber harvesting.
Support to assist in bringing two speakers to the International Holistic Management Conference, Brandon, October 2008.	#1 Abe Collins of Carbon Farmers of America, LLC was created in 2006 by a group of family farmers in Vermont and Massachusetts committed to the health of the Earth and dedicated to rebuilding prosperity in our rural communities. #2 Ken Meter, Crossroads Resource Center, Minneapolis; is an expert on regional food economies. He inspires people to move from being passive recipients of the food system to active participants.
Native Pasture Improvement/Manitoba Pasture Benchmark Project	The Manitoba Native Pasture Improvement Program is exploring new ways for landowners to manage their brush encroachment and ultimately utilize that land for more productive cattle grazing.
Manitoba Grass Fed Beef Association	To assist in the formation of a Manitoba Grass Fed Beef Association, product development promotion and logistical coordination.

**Advertise in MFC's
Newsletter**

Accepting ads NOW!

**Contact Corie Arbuckle
For details:
(204) 254-4192**

Website
sponsorships
available
too!

mfc reports

Green Gold Program – a heads-up as to when to cut your hay

By: John McGregor, MAFRI

Producing top quality alfalfa is all a matter of timing. Years back farmers would see the first flowers appear on their alfalfa and that was the signal that it was time to get the haying equipment up and running to take that first cut of hay. Of course by the time you got everything fixed, greased and the twine bought, the field was in full bloom and if nothing else went wrong you got the first cut off by the end of June. Today we know that the best dairy quality hay has a RFV of 150 in the bale and typically that stage is at or just before flowering.

Green Gold was a program that started in the U.S. about 15 years ago. It was a program that predicted when alfalfa in a given year would reach its optimum quality of 150 RFV weeks in advance of the actual cutting date. The benefit of this program is that it gave forage producers a heads up as to when they could start cutting their hay. This program was introduced into Manitoba and has been running in the Steinbach area since 1994.

Based on hay samples taken from throughout the area twice a week and analyzed for RFV starting in mid-May. Projections are made based on the decline of forage quality as to when it will be optimum. Producers wishing to receive this information can obtain the twice weekly updates by contacting John McGregor at john.mcgregor@gov.mb.ca or (204) 371-1759.



Grazing Mentors Invaluable

Last year 25 producers participated in the National Sustainable Grazing Mentorship Program through the Canadian Cattlemen's Association (funded by Greencover Canada and Ducks Unlimited Canada). The program connected experienced graziers with novice producers to help them incorporate Beneficial Management Practices into their operation.

How it Worked:

Producers paid \$100 to the Manitoba Forage Council and received 16 hours of guidance via on-farm visits and/or by telephone from one of our eight trained mentors. Each mentorship strategy was unique, but the overall goal was to modify or develop a new farm plan. Some of the areas addressed included:

- Improving grazing management
- Improving fencing and watering systems
- Helping with environmental issues
- Establishing productive pastures
- Improving fencing plans
- Grazing planning
- Improved forage production (quantity and quality)

If you are interested contact:

Pam Iwanchysko – Farm Production Extension Specialist – Forage
 (204) 648-3965, pam-ela.iwanchysko@gov.mb.ca
 Or: Larry Fischer – Farm Production Advisor
 (204) 871-2109, larry.fischer@gov.mb.ca

Discover the Diversity of the Central Plains

Provincial Grazing Tour

July 23/24, 2008

This promises to be another great tour again this year. As in previous years the bus will be making stops in various communities to pick up participants. Check out the tour agenda and bus pick up schedule at:
www.mbforagecouncil.mb.ca
 (Upcoming events page)

HIGHLIGHTS OF THE TOUR

7-L LIVESTOCK - Lakeland

Wayne & Colleen Gardiner run a 400 cow-calf ranch. Wayne will talk about changes to their operation since taking a Holistic Resource Management course 2 years ago, showcase his fencing and stock equipment and give an ultrasound demonstration.

A-8 RANCH - Langruth

Tom & Michelle Teichroeb and their girls run a 350 cow-calf operation next to Lake Manitoba. See their riparian site and hear how to deal with poisonous weeds (Jane Thornton, Forage & Pasture Specialist, MAFRI).

WHITEMUD RIVER FARMS - Woodside

Hugh & Robert Blair run a 300 cow-calf operation. Hugh will talk about their custom grazing business, and show their bale grazing site.

STEELE BRIDGE FARMS - Gladstone

Randy & Shelley Bjarnarson have made the transition from grain to grass and run a 500 cow-calf plus custom grazing operation. Randy will talk about testing his grass in summer and mineral use to balance his grass nutrients.

There are also two great options for additional tours:

TOUR - OPTION #1

MAYFAIR FARMS - Portage la Prairie

Vegetable Farm - learn about the growing and marketing of cabbage, cauliflower, pumpkins, corn, potatoes, onions, dry beans, etc.

JEFFERIES NURSERIES - Portage la Prairie

One of the largest wholesale and retail nurseries in Canada marketing mainly in Western Canada.

TOUR - OPTION #2

(limited to the first 30 people PAID)

FOOD DEVELOPMENT CTR - Portage la Prairie

State of the art food development facility providing entrepreneurs with information and technical assistance in food processing, product development, nutrition labeling, etc.

SIMPLOT TOUR - Portage la Prairie

Most modern french fry production factory in North America.

Producers \$75 Industry \$175

Fee includes Meals, Tour and Seminar and one night's accommodation based on double occupancy. Single rooms are \$50 extra. (Registrations are non refundable)

Register ONLINE at:

www.mbforagecouncil.mb.ca, by phone
 (204) 385-6633.

Grazing Club Summer Tours

June 16 – Roblin

June 18 – Reston/Pipestone (contact Michael Thiele (204) 759-3309)

June 23 – Alonsa

June 24 – Toutes Aides

June 25 – Gilbert Plains/ Grandview

Contact Pamela Iwanchysko MAFRI,

(204) 648-3965, pamela.iwanchysko@gov.mb.ca

coming events



**Holistic
Management
international**

**healthy land.
sustainable future.**

Coming this fall - Paradigm Shifting for the Future

October 22-25, 2008, Keystone Centre, Brandon, MB.

HMI works with people around the world to heal damaged land and increase the productivity of working lands. By healing the earth's desertified lands, and by managing healthy land in concert with natural processes, we can repair our malfunctioning ecosystem while achieving a "triple bottom line" of economic, environmental sustainability.

Holistic Management® has been **proven to work, even in drought**, for over 23 years.

Registration: (Early Bird - before October 1, 2008): \$175.00 / October 1, 2008 and after: \$195.00 (Non refundable) Registration includes all conference meals (2 lunches, banquet and breakfast at specified hotels) as well as two rodeos and a cabaret. Additional meal tickets are available at \$25.00.

Some of the Speakers:

Abe Collins - Carbon Farming in America - Collins is a share-milker at Cimarron Farm in Swanton, Vermont, USA. Carbon Farmers of America, LLC was created in 2006 by a group of family farmers in Vermont and Massachusetts committed to the health of the earth and dedicated to rebuilding prosperity in rural communities.

Ken Meter - Local Food Systems - Meter, president of Crossroads Resource Center in Minneapolis, holds 35 years experience in community capacity building as an administrator, researcher, journalist, and educator. He is an expert on regional food economies, helps communities and states achieve the goals of supporting a strong, thriving and sustainable agricultural economy that also feeds their entire population. Meter inspires people to move from being passive recipients of the food system to active participants working toward positive change.

Dr. Jill Clapperton - Managing the Soil as a Habitat - Dr. Clapperton was the Rhizosphere Ecologist at the Agriculture and Agri-Food Canada Lethbridge Research Centre in Lethbridge, Alberta for 15 years. In November 2006, she moved onto the Maclay family ranch near Carlton in western Montana. During her time in Lethbridge, she led the Rhizosphere Ecology Research Group studying plant-disease-soil nematode interactions, crop variety-nutrient uptake-rhizosphere community interactions, and soil organic matter quality influences on the diversity and population dynamics of soil fauna. Currently, she is working part-time at her

consulting business (Earthspirit Land Resource Consulting), lecturing, and stressing over crop rotations and a cropping/grazing plan for 2008 and onwards.

Gordon College - Working together to keep it together. - College is a change navigator in a world marked by rapid and relentless change. He guides us in the process of becoming effective leaders in our communities. He lives in Lethbridge, Alberta.

Ron Chapman - Albuquerque, New Mexico - Chapman, founder and Principal of Magnetic North, LLC, is an inspirational speaker, consultant, and mentor specializing in organization development and personal professional growth. He is an award winning speaker and workshop leader, and holder of the prestigious International Accredited Speaker Designation from Toastmasters International.

Doon Wilkins - Stumbling Toward Enlightenment - Educator, Entertainer, Developer of Human Potential from Canmore, Alberta, Canada. Doon is a talented and accomplished musician, singer, story teller, and comedian, as were both of his parents.

Ivan Aguirre—Rancho La Inmaculada—Mexico - Families Preparing for the Future: Holistic Management in Mexico

Wheat City Stampede (Manitoba Finals Rodeo)
www.wheatcitystampede.com

See the agenda at mbforagecouncil.mb.ca and register ONLINE!

coming events

Grass Fed Beef –An Argentinean Experience

Source: Juanita Kopp, Farm Production Extension Specialist – Beef, MAFRI
Juanita was one of eight delegates of the 'Argentina Grass-Fed Beef Technology Transfer Mission' (March 1 – 11, 2008). The project was initiated by the Manitoba Grass Fed Beef Association, funded by the Manitoba Functional Food Opportunities Program and supported by Manitoba Agriculture, Food and Rural Initiatives.

Argentina is synonymous with grass fed beef; they rarely use grain to finish their cattle. But times are changing. Many ranchers, encouraged by high grain prices are planning to rip up their pastures to plant soybeans, followed by sunflowers or corn.

The Argentinean culture is very dependant on beef. About 3.1 million tons of beef is produced per year (6 billion pounds) and most of it is consumed in the domestic market.

Pasture Management

The campo managers (owners) send the cow herds south or west to the poorer lands, where native ranges are prevalent. After the calves are weaned they send them back to the more fertile lands of the Pampas, where they are back-grounded and later finished. Stocking densities were quoted as kg/ ha and the average weight of stoker cattle is 300 kg and the stocking density is 1100 kg/ha or about 3.5 head/ha. To increase their stocking rates in the Pampas region, and to free up more land for annual crops, they supplement the cattle with cracked corn, sunflower pellets, hay and/or silage at a rate of 0.5 to 1% of body weight.

Gains on Pasture

Attentive graziers monitor their cattle gains throughout the summer to see when the cattle gains are lower and subsequently find ways to manage the late summer slump and fall pasture quality decline. Most of the pastures we toured were alfalfa-grass pastures, but the cattle also grazed corn, sorghum and annual crops. The farm managers targeted average day gains of 600 to 800 g/hd/day or more. Dry matter intake (DMI) on lush alfalfa-grass pastures can be a problem, to offset this they fed



Nueva Castilla ranch's (located in the west region of the Province of Buenos Aires), has a moveable feedlot with 22 pens. Each pen is 1 hectare and holds 400 calves. Calves are fed sunflower screenings, corn silage and corn grain.



Cows grazing sorghum, these cows are being fed for slaughter; more value as a meat animal than as a breeding cow.

forage bits

Argentinian Experience continued

good quality hay to increase the DMI of the cattle which in turn increases their average daily gain (ADG).

To optimize animal gains, the amount of soluble carbohydrates (SCH) and crude protein (CP) need to be balanced. Dr. Anibal Pordomingo, a beef researcher with the National Institute of Agricultural Technology, Anguil, Argentina, stated that the SCH content of forages is very important for animal gain. Evaluating forages only by measuring the % acid detergent fibre (ADF) and % total



Stocker cattle on alfalfa-grass pastures (La Pampa, Argentina)

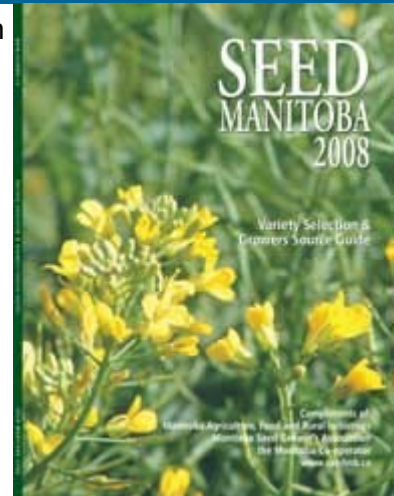
digestive nutrient (TDN) is not the most accurate way of predicting animal performance.

Protein is required by the rumen microbes to grow; the microbial protein that is produced in the rumen later provides protein to the animal.

Nitrogen is quickly released in the rumen after it is consumed; therefore the presence of an easily digested carbohydrate (SCH) is needed by the microbes to capture the nitrogen. The greater the SCH content, the better the match with protein supply and the greater the chances of capturing the nitrogen for microbial growth. The closer the protein to SCH ratio is to 1:1, the better the potential gains.

The following table is adapted from a presentation delivered by Dr. Pordomingo at the 2006 Manitoba Grazing School. It describes the ideal forage chemical composition needed to achieve high individual animal gains.

Desired Composition of Green Forages for High Individual Cattle Gains			
Nutritional Components	Values	Nutritional Components	Values
Dry Matter, %	Above 20	ADF, %	Below 25
Crude Protein, %	Range from 14 to 18	In vitro Digestibility, %	Above 65
Soluble Carbohydrates,	Above 18	Dry Matter Intake, % live weight	Above 2.5
CP:SCH	Similar or below 1	Metabolizable Energy Concentration, MCal/kg DM	Above 2.4
NDF, %	Below 40		
Adapted from the proceedings from 2006 Manitoba Grazing School, Brandon, MB			



Seed Manitoba: Variety Selection and Growers Guide

Check out the "Forage Section" in Seed Manitoba.

It contains yield data from both perennials and annuals, and varietal evaluations for winter hardiness and forage quality.

Available FREE at your MAFRI office or online at www.seedmb.ca

forage bits

Marketing your Hay!

While you've been busy producing top notch hay, our MAFRI Business Development Specialist, Glenn Friesen has been hard at work promoting your hay to our southern neighbours. Glenn has worked diligently to get a link to MAFRI's Manitoba Hay Listing site put up on these websites and is pursuing arrangements with many upper midwest businesses in Wisconsin, Minnesota and Illinois.

**Be sure you've got your hay listed
in MAFRI's Manitoba Hay Listing!**

<http://web2.gov.mb.ca/agriculture/haysearch/>

If you would like to add your name to the list contact your MAFRI office.

Websites that feature links to our Manitoba Hay Listing!

- Nebraska: <http://www.droughtcentral.org/>
- North Dakota: <http://www.ag.ndsu.edu/feedlist/>
- South Dakota: <http://sdces.sdstate.edu/drought/>
- Wyoming: http://ces.uwyo.edu/haylist/Other_Links.htm
- Montana: <http://www.montana.edu/wwwextec/haypasture.html>
- Hay and Forage Growers Hay Listings: <http://hayandforage.com/links/hay/>
- Cows: Cowboy Orientated Website: <http://www.thecattle.net/links/index.htm>
- Alberta: [http://www1.agric.gov.ab.ca/\\$department/deptdocs.nsf/all/str6203](http://www1.agric.gov.ab.ca/$department/deptdocs.nsf/all/str6203)
- Polo Center.com: <http://www.polocenter.com/health/hayca.htm> US Horse Outreach
- Manitoba Horse Council <http://www.manitobahorsecouncil.ca/links.shtml>
- www.needfeed.com (under "Agricultural Links")
- <http://www.haylist.umn.edu/relatedlinks.asp>



forage bits

New Alfalfa Processing Plant to Open in South Dakota

EHAY WEEKLY recently reported on April 29, 2008 that a new alfalfa hay processing plant is being opened in Rapid City, SD, by Southeast Ranch LLC, headquartered in Miami, FL. The article stated the following:

At maximum capacity, the plant can process up to 2 million tons annually, according to Joel Gutierrez, company president. Processed hay will be shipped by rail to a port in Jacksonville, FL, for ocean shipment to customers in Europe, the Middle East and elsewhere.

Gutierrez says his company expects to buy most of its alfalfa hay within 250 miles of Rapid City, a region that includes much of Colorado, Kansas, Montana, Nebraska, North and South Dakota and Wyoming. Purchases are limited to a minimum of one semi-trailer load. The hay must be green and is preferred to be no more than 15% moisture and a minimum of 16% protein, 22% crude fiber, 10.5% ash and 2.5% fat.

The company is buying hay now, and small square, large square and round bales are all accepted, says Gutierrez. He says prices offered are competitive with other options, and payment is made within 21 days following inspection, testing and weighing. Half the agreed-upon price is paid before the hay leaves the

farm. Info at: www.seranch.com, 877-350-2690 or info@seranch.com

When contacted for comment, Glenn Friesen, MAFRI Business Development Specialist in Carman, indicated that this may well be a very positive step for Manitoba producers as initial signals indicate that this facility is linked directly to the large United Arab Emirates hay market, which tendered upwards of 600,000 metric tonnes in the past few years, including 2008.

Friesen is still receiving weekly calls and e-mails from interested buyers in the UAE and is optimistic about potential overseas sales. "I feel it is in our best interest for our forage industry stakeholders to continue to work together to develop the infrastructure required to fit the UAE tender within the next 2-3 years - this includes compression facilities and improved transportation." However, Friesen indicates that this market needs to be managed carefully. "We need to be careful that we are supplying exactly what they want, the worst thing we can do is rush into the market sending any hay we can get our hands on and letting the buyer sort out the end use - this will surely compromise our Canadian reputation."

Friesen noted that the Forage Council is working towards organizing a trade mission with other Canadian forage representatives and the federal government to the UAE in November 2008. The objectives of the trade mission are to assess the market, inform buyers of our ability to provide high quality products, and build on the relationship between Canadian marketers and UAE buyers.

forage bits

Publications Easily Accessible

The Forage Council has worked hard to generate some helpful material for producers. Three booklets are now complete and available either in hard copy or on the MFC website. Contact MFC or MAFRI for your copy today!

Pasture Planner – Check out this guide to help you with your grazing system, livestock handling systems, watering and fencing systems and more. **(see next page for more!)**

Grass Fed Beef Association Drafts Protocol

The Manitoba Grass Fed Beef Association (MGFBA) is moving forward and has developed this protocol for all growers in their value chain. "This is a working template," says Jim Lintott, President of the Association. "It has not been finalized yet but will be pretty close to this."

A production protocol is frequently used by those in the value chain to ensure that the quality of the product meets market specifications. This list will give growers and buyers an idea of requirements necessary to be marketed under the MGFBA. The Association will be marketing Manitoba Grass Fed Beef at three market gardens this summer: St.

Norbert (southwest of Winnipeg), Red River Exhibition (5 minutes east of Winnipeg) and Pine Ridge Hollow (near Oakbank, MB).

"This is a working template," says Jim Lintott, President of the Association. "It has not been finalized yet but will be pretty close to this."

Draft Protocol

1. Each animal has an affidavit that includes: individual animal identification; microchip, animal tag, birth date, weaning date, record of sire and dam, breed, movement history, veterinary interventions, and ultrasound data. The diet of each animal is recorded to verify meat CLA/Omega-3 levels. It is recommended that

animals are weighed every 90 days to manage herd genetics.

2. Diet: must be 100% forage fed; however this may be any combination of grass and legumes from pasture during the growing season or stored forage during the feeding period (winter).
 - The animal (including calves) cannot be fed energy in the form of starch (e.g. cereal grains, potato waste).
 - Cereal crops are to be harvested prior to milk-stage.
 - Calves must remain on mother's milk for a minimum of 60 days.
 - Oil seeds and oil seed byproducts (e.g. meal, oil) are acceptable feed types.
 - No cereal grain supplementation, including corn silage or other high starch feeds.
3. No growth hormones or antibiotics, no animal by-products to be fed.
4. Cattle treated in a humane way according to Canadian standards.
5. Animals are in good health at delivery.
6. Animals must have an ultra-sound at least once before harvest to determine back fat thickness, rib-eye area and shape, and percent intramuscular fat.
7. Farm must be inspected during the production period with the producer certifying the management practices being used.

Publications Easily Accessible

Producing Forage Finished Beef in Manitoba - This booklet has been produced for those producers interested in delving into this niche market. The document provides a detailed description of the elements required to produce high quality beef on a forage only diet.

Sod Seeding – seeding forages into existing stands using minimal tillage (available at mbforagecouncil.mb.ca) - This publication outlines the forage varieties, machinery and techniques most successful for renovating or rejuvenating your pasture.

Forage and Grassland Reference Manual (available at mbforagecouncil.mb.ca) - This highly popular manual has been updated and posted on the MFC website. It is also available on CD for \$10.00.

forage bits

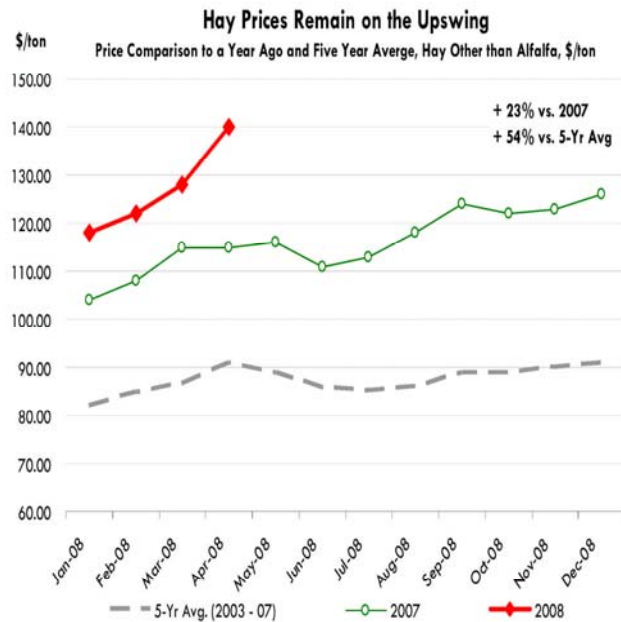
Hay Prices on the Rise!

forage bits



Daily Livestock Report

Livestock market information provided by Steve Meyer and Len Steiner.



Please feel free to forward the Daily Livestock Report to others who you think will benefit from having this information. The DLR is published daily by Steve Meyer and Len Steiner, and distributed courtesy of Chicago Mercantile Exchange, Inc. You can **subscribe for free** by going to www.dailylivestockreport.com/subscribe.asp. To submit a comment or suggestion, please send an e-mail to: feed-back@dailylivestockreport.com. To unsubscribe from the DLR newsletter, go to www.dailylivestockreport.com/unsubscribe.asp.

Disclaimer: The Daily Livestock Report is intended solely for information purposes and is not to be construed, under any circumstances, by implication or otherwise, as an offer to sell or a solicitation to buy or trade any commodities or securities whatsoever. Information is obtained from sources believed to be reliable, but is in no way guaranteed. No guarantee of any kind is implied or possible where projections of future conditions are attempted. Futures trading is not suitable for all investors, and involves the risk of loss. Past results are no indication of future performance. Futures are a leveraged investment, and because only a percentage of a contract's value is required to trade, it is possible to lose more than the amount of money initially deposited for a futures position. Therefore, traders should only use funds that they can afford to lose without affecting their lifestyle. And only a portion of those funds should be devoted to any one trade because a trader cannot expect to profit on every trade. beef

The Globe Logo and CME are trademarks of Chicago Mercantile Exchange Inc. Copyright © 2007 CME. All rights reserved.

Volume 6, Issue 97

May 20, 2008

E-Livestock Volume	20-May	19-May	13-May
LE (E-Live Cattle):	9,084	15,309	15,238
GF (E-Feeder Cattle):	413	231	705
HE (E-Lean Hogs):	8,581	7,137	22,348

Free real-time Globex quotes: www.cme.com/elivestockquotes

Market Comments

With the summer heat approaching, **US cow-calf operators are nervously looking at their forage stocks** and hoping that they will get enough rain to get them through these tough months without having to touch their winter hay or, even worse, go out in the market and try to buy some more. These producers primarily rely on pastures to feed their herds during the summer but a very tough couple of years, with significant droughts first in the Southern Plains and then in the Southeast, has decimated the US beef cow herd. The reduction in available forage stocks as well as higher prices for other feed ingredients have caused hay prices to move sharply higher. For April, USDA reported prices for hay other than alfalfa (a higher quality feed mostly used for dairy cows) to be \$140/ton, 23% higher than the already very high prices of a year ago and a whopping 54% higher than the 2003-07 five year average.

It is still too early to know how the summer pastures will shape up this year. The latest drought monitor update indicates some persisting drought in the Southeast and, more ominously, creeping dry conditions in the Southern Plains. The current cost pressures on cow-calf operators are obvious given the ongoing liquidation of the beef cow herd. Despite high cow slaughter rates in 2006 and 2007, current cow slaughter remains well above year ago levels. Weekly beef cow slaughter in April was an average 10.4% higher than the already high levels of a year ago and 21.7% higher than the 2003-07 average. Maybe the increase in beef cow slaughter has been welcome news to beef retailers and foodservice operators who are facing very tight supplies of imported grinding beef. The reduction is not welcome news for US beef consumers, however. While it may take weeks for broiler supplies to recover, rebuilding the beef cow herd takes years. A lot of effort and money went into building the beef cow herd and it will take some excellent profits to induce producers to again rebuild. Even more than that, it will take feed and that is becoming tighter with each passing day. Further pressuring the sector is the disappearance of pasture land in favor of more grain production. With corn and soybean prices at all time record levels, likely more pastures will "disappear" in the next 12 months. The decline in US beef cow numbers are drastic, which has significant implications for US beef supplies not just for next year but for several years to come.

MAFRI Fact Sheets on MFC website

- Winter watering systems
- Winter grazing options
- Tips on sod seeding forages
- Benefits of including forages in the rotation
- The basics of marketing cash hay
- The basics and benefits of bale grazing
- Snow as a water source for wintering cattle
- Protect alfalfa from winterkill
- Pocket gophers

- Low stress livestock
- Livestock wintering – how it can work for you
- Livestock wintering – locating and managing
- High quality hay management
- Grazing corn & Grazing alfalfa
- Forage management practices from the best
- Forage barleys for Manitoba
- Forage adaptation brochure
- Fertilizing alfalfa forage
- Feeding quality of stockpiled forage
- Baled silage production
- Backgrounding calves with Manitoba silage



**MANITOBA SHEEP
ASSOCIATION INC.**

Attend the Sheep Show & Sale



**August 8 & 9, 2008
Heartland Auction Mart
Viriden, MB**

Entry forms and rules available at
www.mbsheep.ca

- Animals arrive August 8th
- Lamb supper Friday evening
- Show and Sale, Saturday

Contact:

Brian Greaves: (204) 567-3509
Eugene Sabot: (204) 422-8288
Henry Nelson: (204) 869-3759



**Purebred rams
& ewes
Plus commercial
ewe lambs**



affiliated members

**Share WHAT YOU SEE
IN AGRICULTURE!**

a NEW CONTEST FOR CREATIVE-TYPES TO PRESENT IDEAS & SKILLS IN ANY MEDIUM

Young people and 4-H groups across Manitoba are invited to enter this contest, which combines interactive & compelling media projects with information and opinions about agriculture & the province's farm families.

Pick the medium of your choice, select a topic in agriculture to learn more about, and then combine the two into a concept that is creative, informative, entertaining, or persuasive. Every Manitoban between the ages of 9 and 24 is eligible to enter, whether you're from a small town or downtown. The top three finishers in each age group will receive a cash prize and be asked to present their project to KAP's annual meeting next January.

For more information about the contest, please contact Lenore at KAP
Phone: (204) 697-1140. ~ Email: communications@kap.mb.ca


For full contest details and the entry form, visit us online at
www.kap.mb.ca or www.manitobacooperator.ca

TOPIC THEMES

Ag & The Environment
Careers In Agriculture
Global or Local?
The Evolution of Agriculture
Four Seasons in Agriculture

CONTEST DEADLINE:
FRIDAY, NOVEMBER 7 @ 4:00 PM

Project Partners:
Keystone Agricultural Producers



**Manitoba
CO-OPERATOR**

MEDIA IDEAS

Video / Digital / DVD
Web / Web Applications
Public Relations / Promotional
... Or inquire first with a new concept!

YOUR STYLE, YOUR CHOICE:
Fact, Fiction, Narrative,
Promotional, or Opinion

Directors 2008/2009

Jim	Lintott	Chair	Dugald
Don	Green	Vice Chair	Fisher Branch
Nevin	Bachmeier	Director	Kleefeld
Russel	Chapman	Director	Virden
Clark	Combs	Director	Deloraine
Ken	Harms	Director	Snowflake
Chris	Kletke	Director	Brunkild
Fraser	Stewart	Director	Selkirk
Michael	Thiele	Director	Shoal Lake
Ken	Wright	Director	MacGregor
Peter	de Jong	MB Dairy Farmers Rep	LaBroquerie
Glenn	Friesen	MAFRI Rep	Carman
Marcel	Gousseau	MCPA Rep	Oakbluff
Ken	Gross	Industry Rep-Ducks Unlimited	Brandon
Gary	Halwas	Processor Rep	Russell
Heinz	Nolting	MB Forage Seed Assoc Rep	Rosser
Kim	Ominski	U of M Animal Sc. Rep	Winnipeg
Shannon	Scott	AAFC - Brandon Rep	Brandon
Eric	Thornhill	MB Sheep Assn. Rep	Dugald
Wayne	Digby	Executive Director	Brandon

Forage Focus is the quarterly newsletter for the Manitoba Forage Council.

Written and Designed by:

Corie Arbuckle

Edited by:

Wayne Digby, Glenn Friesen,

Pam Iwanchysko

125 Patterson Crescent

Brandon, MB

R7A 6T7

Phone: 204-726-9393

Fax: 204-726-9703

mfc@mbforagecouncil.mb.ca

communications@mbforagecouncil.mb.ca

www.mbforagecouncil.mb.ca



board of directors